

- Restricts to in-house training of remedial teachers
- Becomes a member of Credibility Alliance
- Dr. Maltesh Joshi, Secretary, International Dyslexia Association, Washington, visits Samveda and appreciates its efforts in serving children with LD

2005-06...

Samveda's Foot Prints (2006...)

- Due to lack of infrastructure and funds Samveda's growth cripples
- Can not increase fees as it pinches the purse of the parents
- Spends most of the revenue to pay rents, electric bills, telephone charges, traveling and salaries so can not develop infrastructure
- Can not increase the services, due to lack of funds, lack of trained remedial teachers, lack of good candidates for teacher training program

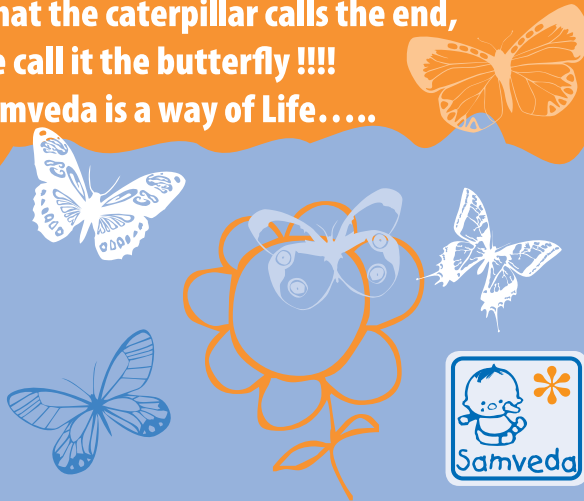
- Can not develop many remedial programs due to lack of funds
- Can not computerise many ideas due to lack of funds
- Can not develop the special campus due to lack of funds

2006....

Samveda's Foot Prints The Present

- The "can not's" can not stop Samveda's work with children with LD
- Whatever that is available is utilized to the optimum
- Self sustenance – Growth – Fund – Raising – Development... are important indicators of a successful NGO
- The Samveda Philosophy protects the NGO and its activities
- Churning fun, smiling all the way and making children with LD successful continues irrespective of the funds crunch, lack of facilities, lack of trained remedial teachers....

What the caterpillar calls the end,
we call it the butterfly !!!!
Samveda is a way of Life.....



Design and prepress by Alvee Kulkar. Printed by Yishwakalya printers, Bangalore.

Making Children Realize Their Full Potential

Samveda



Samveda's Foot Prints
(1994 to Present)



Samveda's Foot Prints

(1994...)

- Suren meets a boy(10) who can not read and write. He can not even write his name
- The boy is studying in V grade
- Suren does not understand what is wrong with the child; but it is interesting as he feels the boy is very intelligent
- Suren enables him write his name in 20 days
- This shocks the parents of the boy and so they decide to pull him out of school and put him in Suren's small factory for further training...

August, 1994...

Samveda's Foot Prints

(1995...)

- Suren meets Dr.Prakash Padakannaya (Dr.PP), Dept., of Psychology, University of Mysore, and discusses the boy's problems
- Discovers and understands the boy is a 'dyslexic'
- Dr.PP encourages Suren to continue the work with the boy
- Suren collects a great deal literature on dyslexia and various studies
- Dr.PP and Dr.G.Jayarama assess the problem of the child and declares him Learning Disabled
- Suren develops many techniques to solve the reading & writing problems of the child...

December, 1995...

Samveda's Foot Prints

(1996...)

- Four more children are pulled out of schools and sent for training at Suren's small factory
- Suren understands that there are many children with Learning Disability and no one knows what is wrong with them
- He takes it as a challenge to solve their problems and decides to dedicate his life to their cause
- He understands a non - profit - team approach would yield good results
- Ms.Kamalakshi Irani joins him as a teacher
- Suren decides to close down his engineer-

ing factory and dedicate himself to Learning Disability

- Started teaching English language to earn his living
- Registered a non govt., organisation(NGO) called Samveda Training & Research Centre after mustering support from his friends
- Mrs.Ambika Suren, appreciates the decision and supports the non-profit work

1996-1997...

Samveda's Foot Prints

(1997...)

- In addition to the English classes Suren starts a tuition program for children with LD.
- However the tuition program could not manage with the low fee of Rs.200/- (\$5)per month per child
- The earnings from English Classes helps sustain Samveda and some furniture and stationary is bought
- Number of children increase which increases the need for more teachers

1997-1998...

Samveda's Foot Prints

(1998...)

- The first batch of Samveda Students appear for the X Grade public exam !
- All students get through the exam !
- Though school teachers come to know of the success, they does not respond
- More students join Samveda
- More untrained teachers join
- Increases yearly tuition fees to Rs3500/-
- Samveda satisfies Parents' expectations
- Donors come forward to donate in cash and kind
- Parents start donating little by little
- Samveda increases the yearly fees to Rs.4000
- Can not manage monthly expenses
- Many ideas for remedial teaching are shelved due to lack of funds
- K.Sowmya joins Samveda

1998-1999...

Samveda's Foot Prints

(1999...)

- Samveda starts a hostel for children with Learning Disability (the first of its kind in India)
- Mrs.Ambika Suren takes the responsibility of being the warden of the hostel
- Children with LD create a difficult environment in the hostel for the warden, care givers and cooks
- Nevertheless Samveda staff learns to handle children

1999-2000...

Samveda's Foot Prints

(2000....)

- Unable to employ good candidates due to lack of funds
- Some who are willing to serve do not possess the right qualifications, and skills
- Those who are good and really contributing are not paid reasonable salaries
- New parents hesitate to approach Samveda and old parents appreciate Samveda's work
- The GOOD WILL increases
- Donors come forward to donate in cash and kind

2000-2001...

Samveda's Foot Prints

(2001....)

- A lot of Awareness building activities are done
- Many newspaper and magazine articles are written and published
- Recognising the efforts, the ministry of Human Resources Development awards a research grant
- Samveda successfully completes the research project and proves 83% of primary school teachers in India do not know what Learning Disability is
- Develops Kannada Language Remedial programme
- Starts designing Samveda Remedial Teaching Model

■ Suren and Dr.PP writes an Introductory guide on Learning Disability

2001-2002...

Samveda's Foot Prints

(2002...)

- Suren joins a post graduate course in Psychology
- Understands Cognitive Psychology is the basis on which SRTM must be developed
- To stimulate cognition in children a whole set of new lesson plans were developed
- Give Foundation comes forward to support Samveda
- Samveda self sustains, but struggles due to lack of funds

2002-2004...

Samveda's Foot Prints

(2004...)

- International volunteers come to Samveda from Spain and Russia to help
- Samveda increases annual tuition fees to Rs.6000/-
- Feels the need of a specially designed campus to train children with LD, remedial teachers, researchers
- Understands that a focused Behavioural and Emotional Program must be a component of SRTM
- Struggles to employ the 'right' kind of people due to lack of funds

2004-2005...

Samveda's Foot Prints

(2005...)

- Remedial teachers are scarce, so Samveda decides to develop a Teacher Training Program.
- Unable to run the program due to lack of infrastructure and funds